

Is this email not displaying correctly? [View it in your browser.](#)

**50**  
1964 - 2014

On 25 February 2014, we turned 50.  
[Click here](#) to learn more about our history and our plans for the future.

## DHI Group / Newsletter #Feb 2014

Follow us on [f](#) [t](#) [Y](#) in [S](#)



Climate change will hit us first through water. With our in-depth knowledge of water environments, we can help you adapt to it effectively.

Higher temperatures and a changing climate are already causing sea levels to rise. In the future, they will engender greater extremes with respect to droughts, rainfall and storms. Climate change will also threaten existing infrastructure that has been designed for a milder climate.

Proofing infrastructure against - and developing infrastructural designs that are resilient to climate change will require significant investments in the coming years. Since the exact consequences of climate change are still uncertain, it's necessary to develop flexible and robust strategies for coping with and adapting to it.

Our comprehensive expertise in water environments can form a sound basis for decision making with respect to [climate change](#) adaptation strategies. We've also developed advanced downscaling techniques that will predict future extreme events for precipitation, river runoff, storm surges and so on. These will form the bases for designing infrastructure that are more resilient to climate change.

The downscaling techniques are incorporated in our climate Decision Support Systems (DSS). These techniques predict and visualise the impact on the future climate, based on global or regional circulation model results.

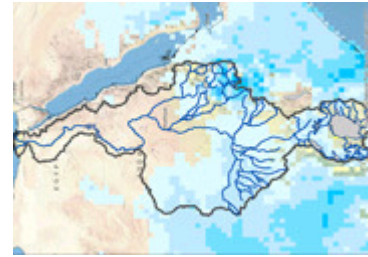
Read the newsletter to find out more about some of our challenging climate change projects.

Best regards,  
Kim Wium Olesen  
Market Area group coordinator - Climate change  
[kwo@dhigroup.com](mailto:kwo@dhigroup.com)

**/ Get inspired**

### Modelling future flows of the Nile River

Working with the Met Office Hadley Centre, we've developed new regional climate projections as well as a hydrological and water resources model for the Nile Basin Initiative (NBI) and United Nations Environment Programme (UNEP). The regional study will help the NBI countries increase their knowledge of the potential impacts of climate change on the Nile flows.



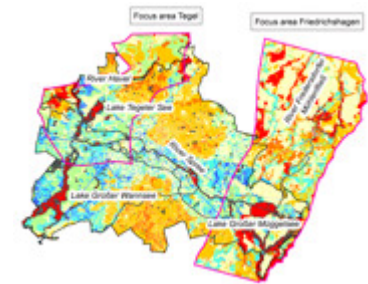
### Improving risk-based design in the face of climate change

The RiskChange project focuses on the changing risk to society from climate change. It seeks to establish a consistent, science-based framework for risk-based design of critical infrastructure, as well as develop decision support tools. To achieve this, we work with and coordinate the efforts of seven project partners.



### Groundwater and surface water modelling for the INKA BB project

As part of the INKA BB project, we modelled future groundwater flow and recharge in the Berlin-Brandenburg region, Germany. In so doing, we were able to optimally visualise the future impacts on groundwater levels and quantify the deficits in water availability against the background of reduced groundwater recharge.



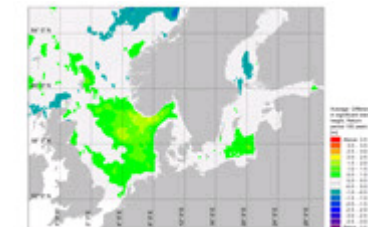
### Modelling the 180 kilometre Limfjord

We used MIKE 21 to determine the correlation between erosion and storm surges, as well as the possible impact of climate change in the Limfjord. In so doing, we gave the Danish Coastal Authority the requisite tools for examining future problems involving flooding in the region and advised them on possible solutions.



### Creating a wave atlas

We conducted several numerical model studies to develop a comprehensive wave atlas - an overview of wave conditions in the Danish waters. This product provides easy access to the said wave conditions, including potential effects of climate change on them.



### Helping Vidaa adapt to climate change

We conducted extensive hydrological and hydraulic studies on the Vidaa River system. We also conducted comprehensive analyses of the flood risk and the probability of dike overtopping in the near and distant future. Informed decisions on climate adaptation can now be taken on the basis of our projections.



[\\_ DHI Climate Change Guidelines](#)

[\\_ More Solutions and Case Stories](#)

## / Stay informed

[Contacts](#)

[We celebrate our 50-year anniversary](#)

[Marketing](#)

[Optimising the Penguin wave energy converter using our offshore wave basin](#)

Jesper Ulrik Fuchs

[More DHI offices receive ISO 9001 certification](#)

Jan Ole Hansen

[THE ACADEMY by DHI joins forces with the Technological University of Denmark \(DTU\)](#)

Ole Svenstrup Petersen

[Contributing to an ambitious research project on marine biodiversity](#)

Anne Lise Middelboe

[DHI-led consortium wins flagship European project on underwater noise, vibration and EM emission impacts](#)

Frank Thomsen

[Our Asia Pacific regional aquaculture hub moves to Singapore](#)

Guillaume Drillet

[\\_Click here for more news](#)

## / THE ACADEMY: Enhance your knowledge

Training and capacity building with respect to climate change are important tasks for THE ACADEMY by DHI. We regularly organise climate change-related training courses and events at our offices worldwide. By attending them, you can learn how to cope with the consequences of climate change in your daily work.

Among our climate change courses are:

- Climate change, coast and sea: Impacts of climate change and sea water rise on coasts and marine areas - to be held in [Denmark on 14 May 2014](#)
- Urban flooding - analysis and management: Preparing for flooding and the impact of climate change on your city - to be held in the [Czech Republic on 17-18 June 2014](#), in [Germany on 19-20 June 2014](#) and in [South Africa on 28-29 August 2014](#)

## / Build your network

**Mar 2014** [EWEA 2014](#)  
Barcelona, Spain  
10-13 Mar 2014

**Mar / Apr 2014** [ChemCon Europe 2014](#)  
Istanbul, Turkey  
31 Mar-4 Apr 2014

**Apr 2014** [International conference on Desalination, Environment and Marine Outfall Systems](#)  
Muscat, Sultanate of Oman  
13-16 Apr 2014

**Jun 2014** [Computational Methods in Water Resources International Conference](#)  
University of Stuttgart, Germany  
10-13 June 2014

**Aug 2014** [Hydroinformatics HIC 2014](#)  
New York  
17-21 Aug 2014

**May 2014** [SEPAWA Nordic Conference](#)  
Malmö, Sweden  
5-6 May 2014

## / Topical newsletters

MIKE by DHI The NetWork

Environment and Toxicology

The NetWork provides you with all the news and useful information about MIKE by DHI software:

- [\\_ The NetWork February](#)
- [\\_ The NetWork December Special Edition](#)
- [\\_ The NetWork November](#)

[Click here to subscribe to this newsletter.](#)

Read our latest news regarding the implications of chemical substances and their effect on humans and the environment.

- [\\_ Chemicals](#)
- [\\_ Food](#)
- [\\_ Life Science](#)
- [\\_ Meet Us](#)
- [\\_ Courses](#)

[Click here to subscribe to this newsletter.](#)

## / About this newsletter...

This newsletter was sent to you by DHI in response to your registration.

All details are treated confidentially and will not be transferred to third party.

For further details on [all our contacts](#) /Solutions/ CSR/ MIKE CUSTOMISED by DHI/ MIKE by DHI/ Climate Change/ THE ACADEMY by DHI/ News, go to [www.dhigroup.com](http://www.dhigroup.com)

Follow us on **f t Y in S**